

**HABITAT
PANEL
FENCING**

**PRODUCT GUIDE
INSTALLATION
TECHNICAL SPECIFICATIONS
CARE & MAINTENANCE**

PANEL FENCING

COEN
COMPOSITE WOOD

COEN WPC is a new type of composite made by mixing 60% wood powder with 30% HDPE and 10% additives. These are extruded through our modern CNC high pressure / temperature extrusion machines. Our WPC not only has a high degree of anti-UV and weather resistance, but is also easy to work with and install. COEN WPC's are highly resistant to moisture, so there is no "Wood Rot" and termites just don't seem to like getting near our products. No cracking, warping or splintering ensures an efficient and easy installation process for our builders. We also have a very stable UV product, so the colour will have very minimal fading from the harsh Australian conditions.

Our WPC is a safe and environmentally responsible alternative, that doesn't require any painting or coatings to ensure colour or longevity. The main materials used are wood powder, from

scrap building and factory waste, such as wood furniture and construction manufacturers. In addition, we recycle any off cuts or waste from our manufacturing process. The aim here is to improve our environment through recycling.

The raw material quality is paramount to our product being consistently manufactured to the specifications, to ensure the products longevity. As such we only select quality raw products and each batch is tested to our required standard prior to entering its first stage of production process. (Ref our web site for the production process).

After production, each batch of COEN Composite Wood is tested for its elasticity and strength. Once our products have a consistency in size and colour they are cut to our standard lengths.

BENEFITS OF COEN



PRODUCT DESIGN &
INSTALLATION OPTIONS



HIGH DURABILITY



DOESN'T ABSORB WATER,



MINIMAL COLOUR FADE



HIGH MECHANICAL



EXCELLENT DIMENSIONAL STABILITY



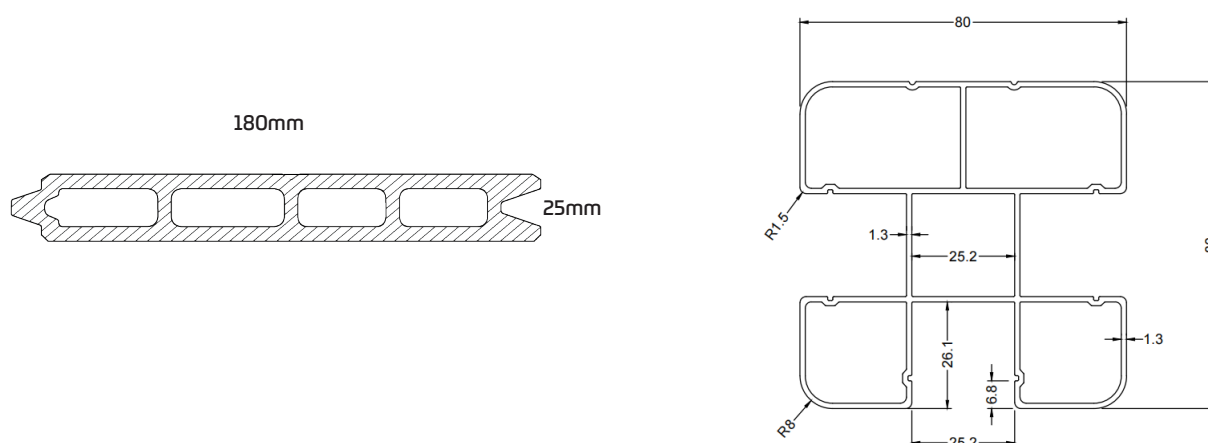
EASY CLEANING,

*Easy to install fencing
made to last in Australian
conditions, with no oiling
or sealing required.*

PANEL FENCING

COEN
COMPOSITE WOOD

PRODUCT PROFILE



STANDARD COLOURS



FENCE PANELS



FENCE POST



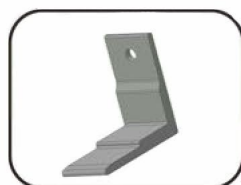
SIDE COVER



TOP & BOTTOM
RAILS



POST CAP



FIXING BRACKET



BASE PLATE

INSTALLATION TOOLS AND ACCESSORIES



CIRCULAR SAW

Cut COEN composite wood to specific lengths on site to meet installation requirements.



HAND DRILL

Since Composite materials have a higher density, all screw holes should be pre-drilled.



ELECTRIC HAMMER DRILL

Use a Hammer Drill for securing expansion bolts into concrete



TAPE MEASURE



LEVEL



STAINLESS STEEL SCREWS FOR
BASE PLATE TO FOOTING



STAINLESS STEEL SCREWS
FOR BASE PLATE TO POST

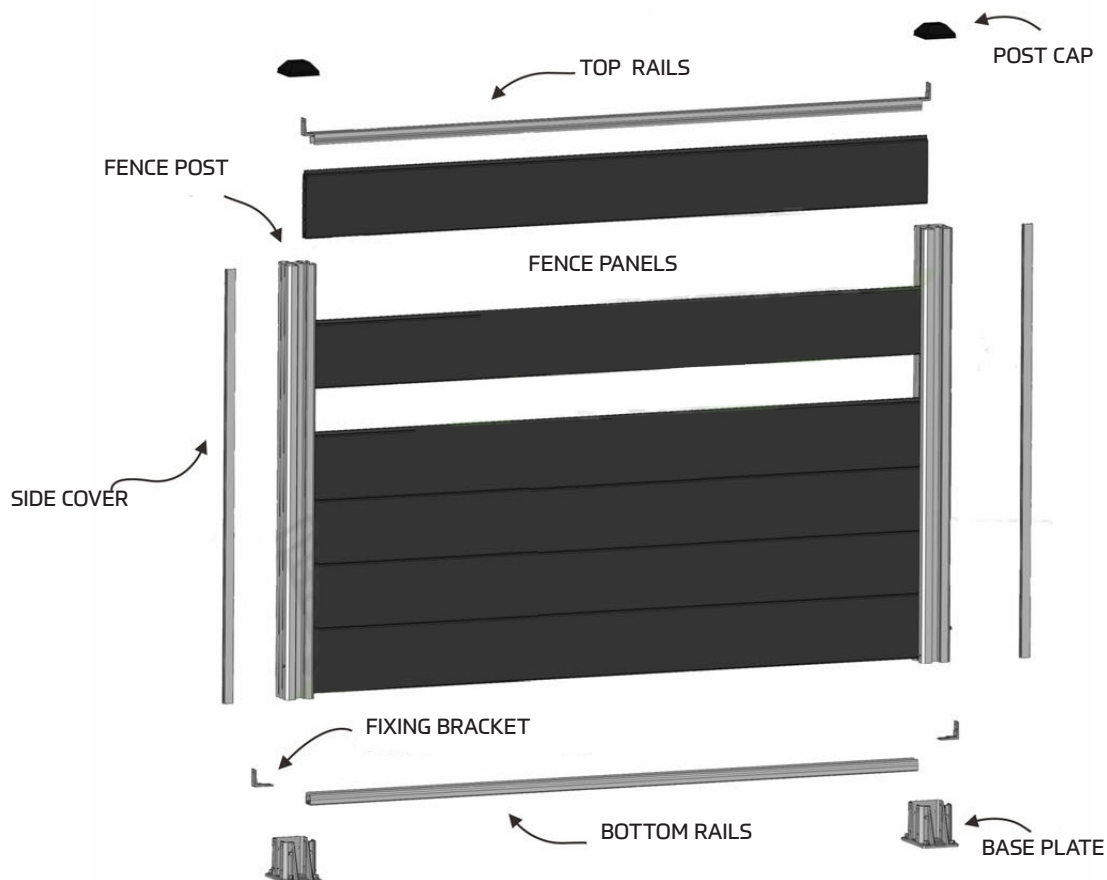


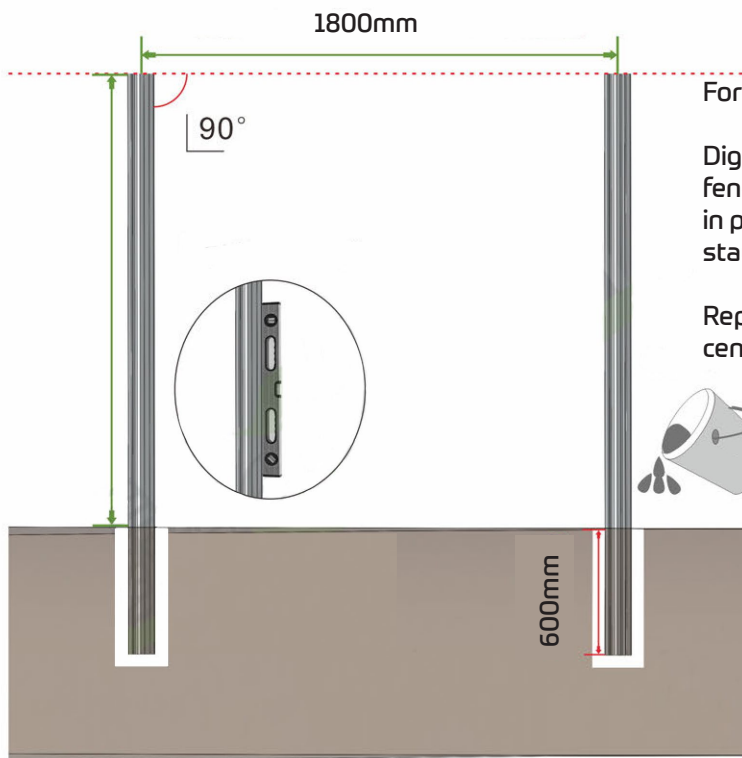
HAMMER

SAFETY

When cutting, drilling or hand sawing any WPC material, ensure you wear a dust mask and safety glasses.

COMPONENTS





For installation into the ground.

Dig a hole 600mm deep and insert your fence post. Add concrete to hold the post in place, and use a level to ensure the post stays square.

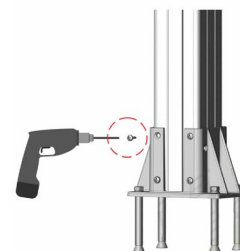
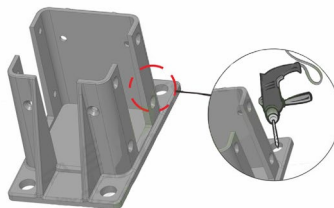
Repeat the process using 1800mm centres

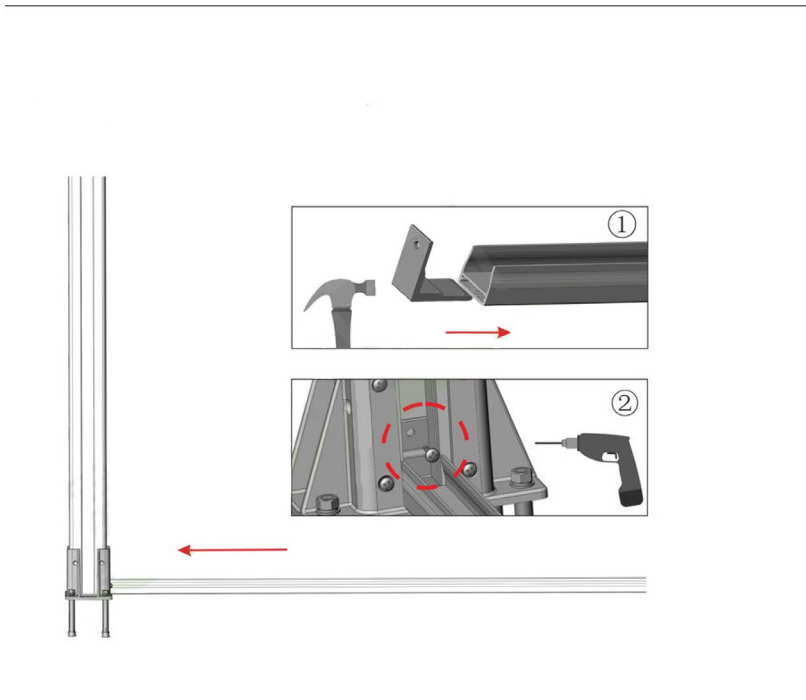
For installation onto the concrete.

Fix the base plates to the concrete using the expansion bolts supplied.

Using a drill fix the fence posts into the base plates.

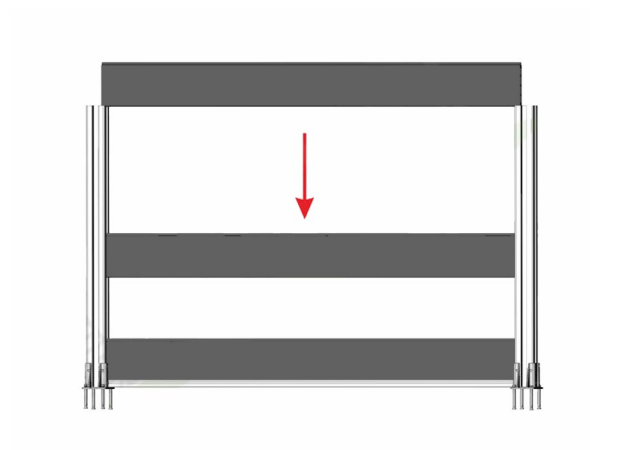
Repeat the process using 1800mm centres.



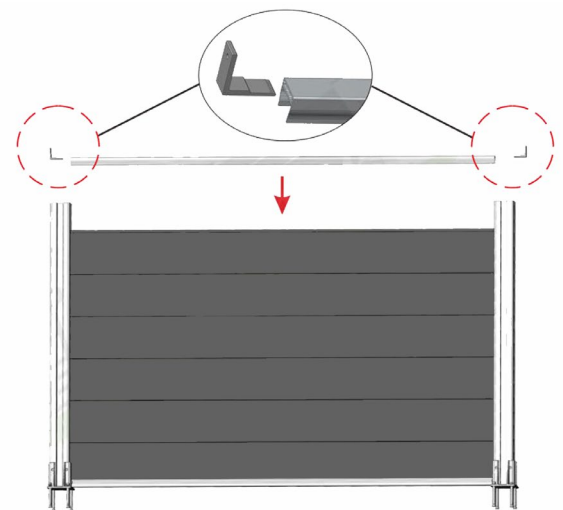


Insert the fixing bracket into the bottom rail and gently tap it into place with a hammer or rubber mallet.

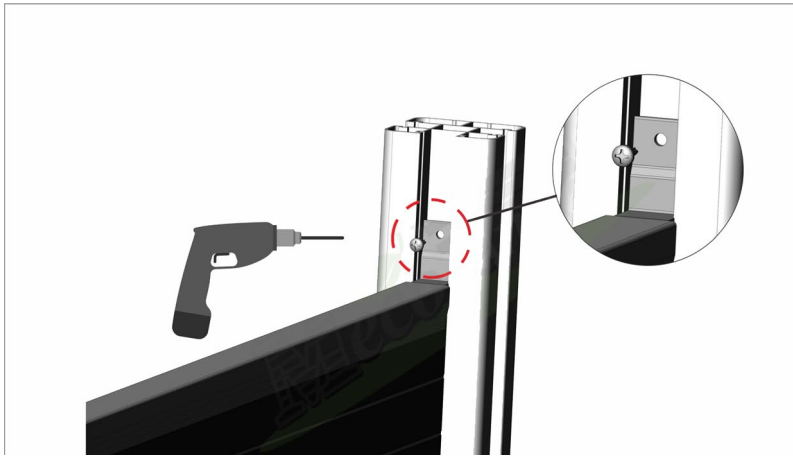
Using a drill, attach the bottom rail to your posts.



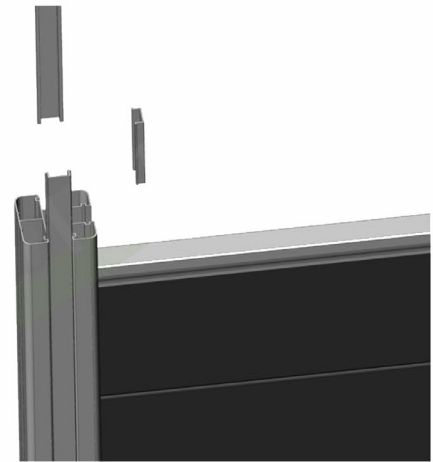
Slide your fencing panels into place, each fence panel will interlock with the last.



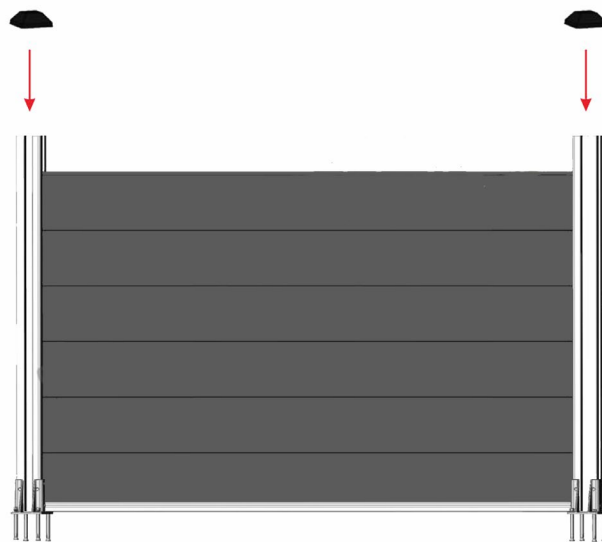
Insert the fixing bracket into the top rail and gently tap it into place with a hammer or rubber mallet.



Using a drill, attach the top rail to your posts.



Slide in your side covers, these can be cut down where required.



Add your post caps to the top of your posts.
Your fencing system is now complete.

TECHNICAL SPECIFICATIONS	Dimensions (mm)
Dimensions	1.8m x 1.8m
Standard Length	1.8m
Number Of Composite Wood Panels per 1.8m section	10
Panels per Pallet	100
Aluminium Post - Bolted onto Concrete Plinth	1.8m
Aluminium Post - Cemented into Ground	2.4m or 3m
Aluminium Posts For First Fence Section	2
Aluminium Posts For Each Section	1
Aluminium Top rail / section	1
Aluminium Bottom rail / section	1
Side Cover / Section	1
Minimum clearance from wall (mm)**	5



Following our easy-care tips will ensure that your fencing looks fresh and attractive for years to come.

NORMAL CARE

Once COEN fencing is installed, periodic cleaning is necessary to keep it looking great. For dirt, dust and other residue, simply brush with a soft broom. If necessary, wash the fencing down in the direction of the grain with a garden hose or a pressure washer, no more than 1,500 psi.

PROBLEM	SOLUTION
Mould and Mildew	Clean away leaves and debris that promote mould growth. Ideally, you should clean the dirt off your fence before mildew starts, because the dirt is what feeds the mould. If mould/mildew appears, a deck washing product and a detergent can be used. Never mix any other cleaners with the deck washing product. Cleaning vinegar can be used to kill the mould.
Rust stains/stubborn spots	Use a cleaning product containing oxalic or phosphoric acid base to lighten or remove the rust or dirt. Product may need to sit on stain 10-15 minutes.
Oil and Grease Stains	As soon as the spill has occurred, use hot water and dishwashing detergent, to remove the stain. Be sure to thoroughly rinse the detergent off the fence with hot water. If need be, use a light stainless steel scourer.
Berries and Wine Stains	Mix bleach into hot water according to the bleach-packaging label. Scrub the stain lightly and rinse thoroughly. The stain may not disappear entirely.
Ink Stains	Inks may be permanent. However, scrubbing with hot soapy water may lighten the stain. Rinse thoroughly.

Note: Please note that some cleaners can lighten the colour of your fencing, so always test any cleaner on a small portion before cleaning the entire surface.

ADDITIONAL TIPS

- Never apply harsh solvents such as acetone, gasoline, benzene, carbon tetrachloride or paint thinner to your fencing.
- Never mix two or more cleaning agents when cleaning your fencing.
- Keep the area around your fence clean and well ventilated.
- If you have any further queries, please call us at COEN – 1800 105 031 or email info@coen.com.au

STORAGE

Storage is simple. Store flat, in a dry area, under cover and out of the sun. Keep your COEN products wrapped in the packaging it arrives onto site. If you need to store your COEN products for a longer than expected period of time, or have a delay in your project, call us at COEN and we'll store your product for you at an agreed price & period of time.