

GENESIS DECKING

COEN
COMPOSITE WOOD
BUILDING A BETTER ENVIRONMENT

Creating beautiful spaces

A premium, fully encapsulated decking board with seven colour tones to suit contemporary homes.



- Dual sided contrasting colours
- Low maintenance
- Oil and fat simply wipes off
- Scratch resistant
- Hidden clip system
- Quick & easy installation
- R12 & P3 slip rating
- 25 year warranty



"I can't recommend COEN more highly, I won't be shopping around next time I'm in the market for composite timber."

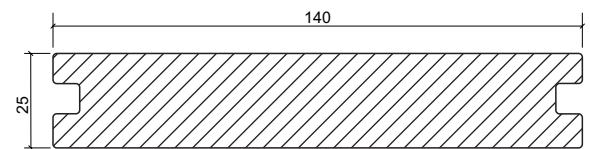
Trent and Belinda Irvine



TECHNICAL SPECIFICATIONS	mm
Dimensions	140 x 25mm x 5.4m
Boards / Pack	70
Minimum ground clearance	100
Minimum clearance over concrete	30
Joist centres (max distance)*	450 - 500
Joist centres - Light Commercial (max distance)*	
Joist centres - Commercial (max distance)*	350-450
Minimum end-gap – butt join	5
Minimum gap – side by side	4
Minimum end gap to solid structure	5
Minimum distance from edge of board for Top fixing	20
Minimum distance from end of board for Top fixing	20
Maximum overhang at end joist	20
Number of SS Starter Clips	one/joist
Number of SS Decking Clips/sqm	22
Top / Face Fix Screw (Typical Decking Screw) size	5x75mm

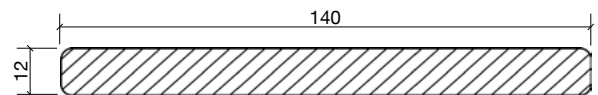
SOLID DECKING PROFILE

(Shown at 1:2)



FASCIA BOARD PROFILE

(Shown at 1:2)



SELECT DECKING

COEN
COMPOSITE WOOD
BUILDING A BETTER ENVIRONMENT

Delivering low maintenance style



OAK



JARRAH



ASH GREY



CHARCOAL

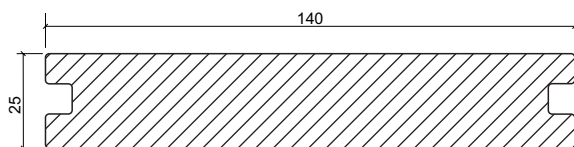
A highly durable decking product available in hollow or solid profiles, with easy installation and low maintenance

- Durable with through colour
- Timber grain or brushed finish
- Concealed fixing system
- Solid board designed for high load/commercial applications.
- Water and termite resistant
- Won't splinter
- R12 & P3 slip rating
- 15 year warranty (hollow)
20 year warranty (solid)



SOLID DECKING PROFILE

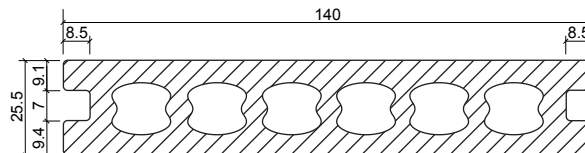
(Shown at 1:2)



140x25mmx5.4m

HOLLOW DECKING PROFILE

(Shown at 1:2)



140x25mmx5.4m

TECHNICAL SPECIFICATIONS	Solid Decking (mm)	Hollow Decking (mm)
Dimensions	140 x 25mm x 5.4m	140 x 25mm x 5.4m
Boards / Pack	70	70
Minimum ground clearance	100	100
Minimum clearance over concrete	30	30
Joist centres (max distance)*	450 - 500	400 to 450
Joist centres - Light Commercial (max distance)*		350-400
Joist centres - Commercial (max distance)*	350-450	
Minimum end-gap – butt join	5	5
Minimum gap – side by side	4	4
Minimum end gap to solid structure	5	5
Minimum distance from edge of board for Top fixing	20	
Minimum distance from end of board for Top fixing	20	
Maximum overhang at end joist	20	20
Number of SS Starter Clips	one/joist	one/joist
Number of SS Decking Clips/sqm	22	22
Top / Face Fix Screw (Typical Decking Screw) size	5x75mm	N/A

*If you require confirmation of joist centres on a "uniformly distributed action" and a "concentrated action" for Solid Decking, please contact COEN

In all cases for Hollow Decking, when screwing down do not overdrive screws. Fix with low to medium torque. Fixing too close to the end of the board will cause splitting. DO NOT fix within 15mm of end of board.

HABITAT SCREENING

COEN
COMPOSITE WOOD
BUILDING A BETTER ENVIRONMENT

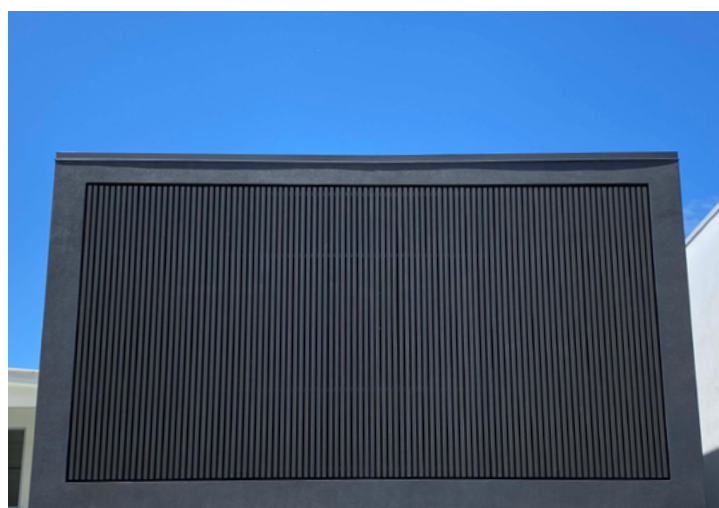
Defining outdoor living

An architectural product with endless design options that's easy to install and ideal for hard to reach places.

- Durable and through coloured
- Range of colours and sizes
- No maintenance required
- Sanded finish
- Flexible installation options

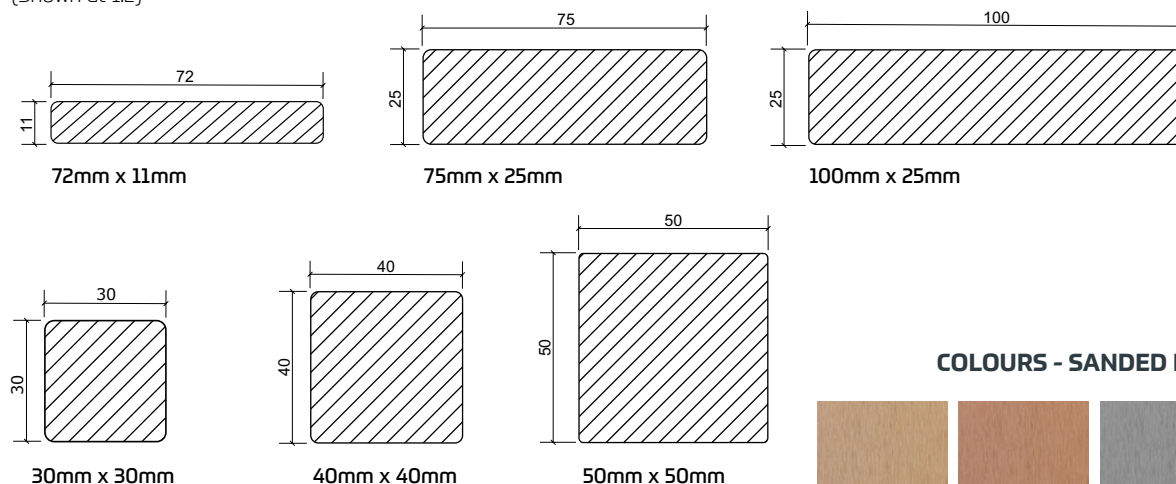


"I love it – The product is very easy to work with and to install, and the end result is better than what I expected."



SOLID PROFILES

(Shown at 1:2)

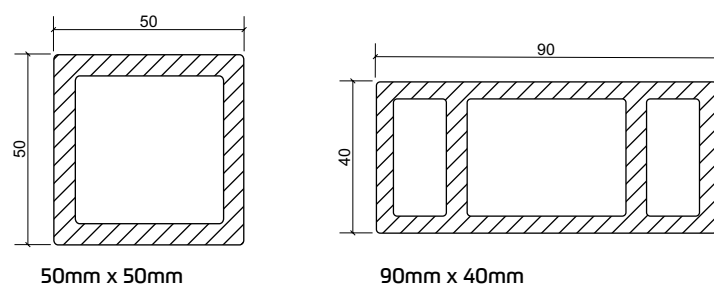


COLOURS - SANDED FINISH



HOLLOW PROFILES

(Shown at 1:2)



TECHNICAL SPECIFICATIONS

	Solid Screening (mm)	Hollow Screening (mm)
Boards / Pack	Various	Various
Number of fasteners per screen width*	1 to 2	1
Maximum Batten centers - Horizontal	600 to 800	600 to 800
Maximum Batten centers - Vertical	600mm to 1.2m	600mm to 1.2m
Maximum Batten to First Fixing Point - Vertical	400 to 600	400 to 600
Minimum clearance from wall (mm)**	5	5
Minimum screening spacing	5	5
Minimum ground clearance	10	10
Minimum clearance at screen end from fixed structure	5	5
Butt gap minimum	4	4

Product can be fixed directly onto a wall with minimal exposure to weathering, using a Sicaflex or other product applied, then screwed to wall.

HABITAT FENCING

COEN
COMPOSITE WOOD
BUILDING A BETTER ENVIRONMENT

Defining outdoor living

Contemporary, low maintenance panel and batten fencing systems, that are

- Modern design
- Quick and easy installation
- Aluminium and composite wood system
- No maintenance required
- Termite resistant
- Durable and long lasting



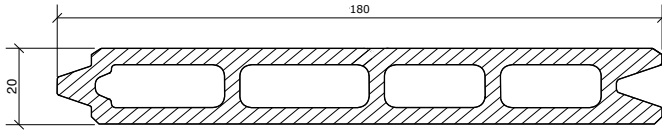
"I am really pleased with the end result of my fence, I chose COEN Composite Wood to not only enhance the aesthetic of my home, but also for its low maintenance and durability qualities."

Annakie Jordan,
Residential Fencing

Batten Fencing

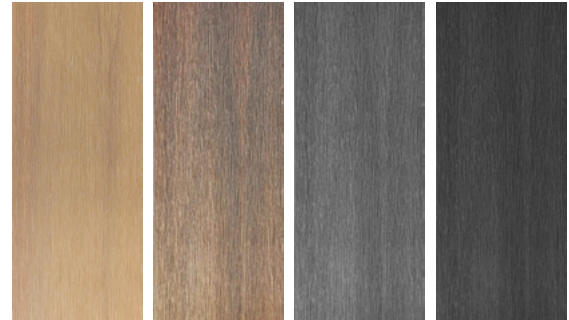
PANEL PROFILES

(Shown at 1:2)



180mm x 23mm x 1.76m

COLOURS - BRUSHED FINISH



Beach

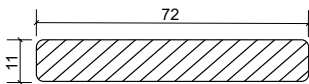
Marine Teak

Ash Grey

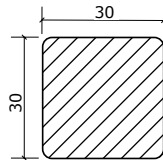
Charcoal

BATTEN PROFILES

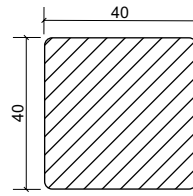
(Shown at 1:2)



72mm x 11mm x 4m



30mm x 30mm x 4m



40mm x 40mm x 4m

COLOURS - SANDED FINISH



Oak

Jarrah

Ash Grey

Charcoal

TECHNICAL SPECIFICATIONS (PANEL FENCING)

Dimensions (mm)

Dimensions	1.8m x 1.8m / 2m
Standard Length	1.8m
# Of Composite Wood Panels / 1.8m section	10 / 11
Panels / Pallet	150
Aluminium Post - Bolted onto Concrete Plinth	1.8m
Aluminium Post - Cemented into Ground	2.4m / 3M
Aluminium Posts For First Fence Section	2
Aluminium Posts For Each Section	1
Aluminium Top Rail and Bottom Rail / section	2
Post Cap / section	1
Side Cover / Section	1
Minimum clearance from wall (mm)**	5mm

HABITAT SLEEPERS

COEN
COMPOSITE WOOD
BUILDING A BETTER ENVIRONMENT

Defining outdoor living

A rugged product, with modern aesthetics enhancing garden spaces and built to last in the Australian outdoors.

- Suitable for parks and gardens
- Brushed charcoal finish
- Low maintenance required
- Long life span
- Won't bow, warp or twist
- Resists mould, water and sun



"We really like the appearance of the COEN Sleepers and they certainly are easy to handle and work with."

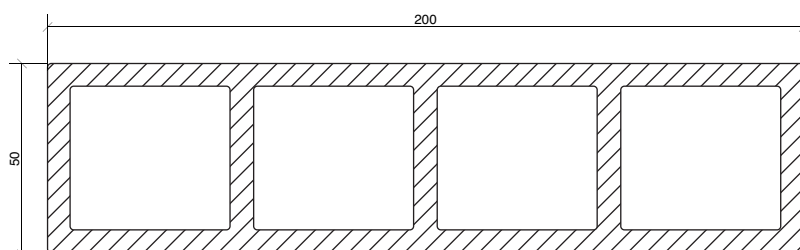
Philip Bradshaw





SLEEPERS PROFILE

(Shown at 1:2)



200mm x 50mm x 1.8m / 2.4m

TECHNICAL SPECIFICATIONS	Dimensions (mm)
Dimensions	200x50mm
Standard Length	1.8m and 2.4m
Boards / Pack	60
Maximum support centres - 2.4m	1.2m
Maximum support centres - 1.8m	900mm
Fixing Options	50mm "H" or "U" Galvanised Posts
Maximum height	3 Sleepers
Minimum clearance from wall (mm)	5
Butt gap minimum	4

HABITAT CLADDING

Defining outdoor living

Clean design lines with a brushed finish. Great for the harsh Australian conditions.

COLOURS - SHIPLAP



Beach



Marine Teak



Shale Grey



Charcoal

COLOURS - CASTELLATED



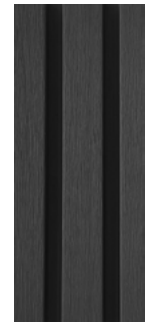
Beach



Marine Teak



Shale Grey

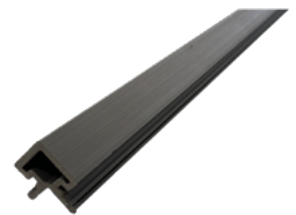


Charcoal

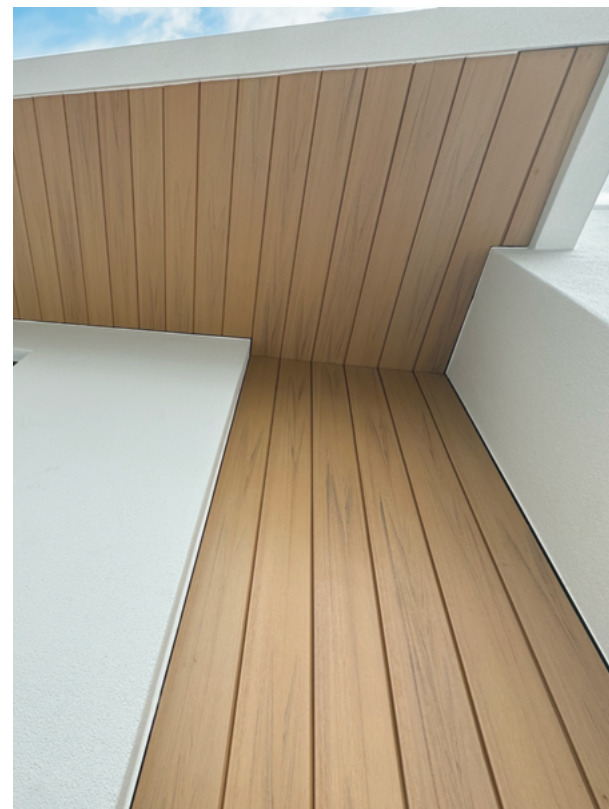
CASTELLATED STARTER



CASTELLATED CORNER

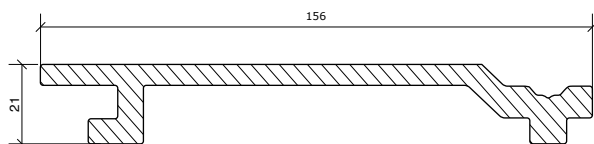


- Quick installation
- Long life span
- Won't bow, warp or twist
- Low maintenance
- Fire rated to AS NZ 3837 & AS NZ 1530-3



SHIPLAP CLADDING PROFILE

(Shown at 1:2)

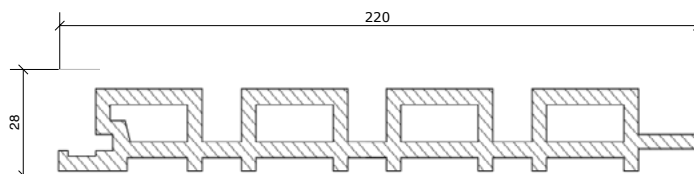


156mm x 21mm x 5.4m



CASTELLATED CLADDING PROFILE

(Shown at 1:2)



220mm x 28mm x 2.9m



TECHNICAL SPECIFICATIONS	SHIPLAP	CASTELLATED	Comments
Dimensions	146 x 21mm x 5.4m	220 x 28mm x 2.9m	Brushed Finish
Boards / Pack	210	80	
Minimum ground clearance	100mm	100mm	
Minimum clearance over concrete	20mm	20mm	
Batten centres (min & max distance) – Domestic	300 to 600mm	300 to 600mm	In high wind areas, batten spacing should be 300mm
Batten size	40 X 25	40 X 25	
Batten with but joining	100 X 30	100 X 30	
Minimum end-gap (butt join)	4mm	4mm	
Maximum overhang from last batten	50mm	50mm	
Screw distance from cladding board edges	Min 15, max 25	Min 15, max 25	
Batten fastening screws	4 to 5mm x 40 to 60mm pending batten size	4 to 5mm x 40 to 60mm pending batten size	Screws must comply with AS 3566 Self Drilling Screws for the Building and Construction Industries.
Cladding fastening screws	3.5x30 stainless steel	3.5x30 stainless steel	Screws must comply with AS 3566 Self Drilling Screws for the Building and Construction Industries.