

HABITAT CLADDING

Defining outdoor living

Clean design lines with a brushed finish. Great for the harsh Australian conditions.

COLOURS - SHIPLAP



Beach



Marine Teak



Shale Grey



Charcoal

COLOURS - CASTELLATED



Beach



Marine Teak



Shale Grey

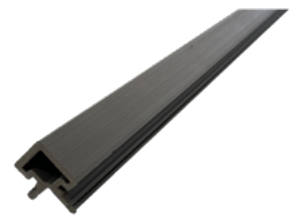


Charcoal

CASTELLATED STARTER



CASTELLATED CORNER

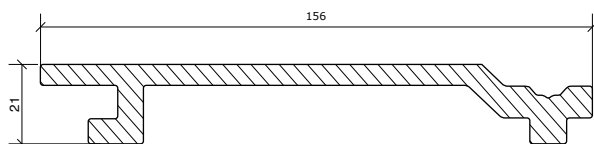


- Quick installation
- Long life span
- Won't bow, warp or twist
- Low maintenance
- Fire rated to AS NZ 3837 & AS NZ 1530-3



SHIPLAP CLADDING PROFILE

(Shown at 1:2)

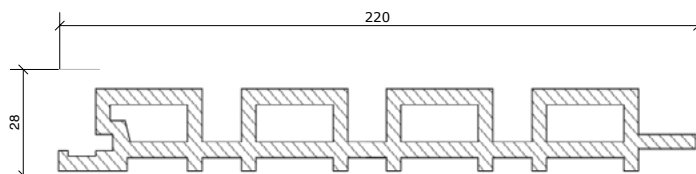


156mm x 21mm x 5.4m



CASTELLATED CLADDING PROFILE

(Shown at 1:2)



220mm x 28mm x 2.9m



TECHNICAL SPECIFICATIONS	SHIPLAP	CASTELLATED	Comments
Dimensions	146 x 21mm x 5.4m	220 x 28mm x 2.9m	Brushed Finish
Boards / Pack	210	80	
Minimum ground clearance	100mm	100mm	
Minimum clearance over concrete	20mm	20mm	
Batten centres (min & max distance) – Domestic	300 to 600mm	300 to 600mm	In high wind areas, batten spacing should be 300mm
Batten size	40 X 25	40 X 25	
Batten with but joining	100 X 30	100 X 30	
Minimum end-gap (butt join)	4mm	4mm	
Maximum overhang from last batten	50mm	50mm	
Screw distance from cladding board edges	Min 15, max 25	Min 15, max 25	
Batten fastening screws	4 to 5mm x 40 to 60mm pending batten size	4 to 5mm x 40 to 60mm pending batten size	Screws must comply with AS 3566 Self Drilling Screws for the Building and Construction Industries.
Cladding fastening screws	3.5x30 stainless steel	3.5x30 stainless steel	Screws must comply with AS 3566 Self Drilling Screws for the Building and Construction Industries.